

# ArtOral® **Chroma FILL**

Aesthetic, light-cure  
dental  
restorative material



[www.r-dental.com](http://www.r-dental.com)

Product information



Bite to Perfection

# ArtOral® Chroma FILL

## Aesthetic, light-cure composite - one shade solution - all shades by one

### Introduction

An aesthetic challenge is the adaptation of the shade of a restoration to the natural tooth structure. The shade and therefore the aesthetic sensation is caused by light scattering and light diffraction and the resulting interference from the incident light on small particles and structures within the tooth (apatite) and the restoration (filler), namely when these particles and structures are smaller than the wavelength of the incident light (400-750 nm). Physically this is the so called opalescence of the tooth [Wikipedia].

When single or agglomerated spherical filler within the restoration material are smaller than 0.2 µm (200 nm), then the above-mentioned requirements for an adaptive shade are fulfilled, which is also known colloquially as the "chameleon effect".

The quality of the restoration material is now evident in the fact, that despite the small filler are coated with resin, the restoration material (composite) has a low-stick consistency, so that an excellent handling for the dentist is guaranteed.

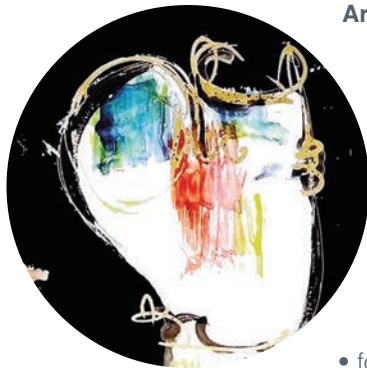
**ArtOral® Chroma FILL** offers these mentioned advantages of an pigment-free composite with excellent handling and at the same time with high mechanical strength after curing.

**ArtOral® Chroma FILL** is a light-cure, radiopaque restoration material (composite) for restorations in the anterior and posterior region (Anterior- and Posterior-Restorations). Because of the continuous colour adjustment **ArtOral® Chroma FILL** is suitable for all natural tooth shades. It is characterized by a permanent gloss and tooth-like opalescence.

**ArtOral® Chroma FILL** has excellent physical characteristics, a good handling and can be polished superior with little effort.

**ArtOral® Chroma FILL** is indicated

- for restorations of all cavity classes,
- for direct veneers,
- for diastema closure and
- for repairing ceramic restorations (e. g. veneers, crowns).



### ArtOral® Chroma FILL

### Benefits

In case of small cavities **ArtOral® Chroma FILL** can be applied directly.

**ArtOral® Chroma BLOKK** is a basal, light-cure composite, which can be used in combination with **ArtOral® Chroma FILL** to mask discoloured teeth.

**ArtOral® Chroma BLOKK** is indicated

- for masking an oral cavity in case of extended class III and IV cavities, for masking of tooth discoloration and
- for a first layer for class I, II and V cavities of dark teeth.



### ArtOral® Chroma BLOKK

Highly recommended is the application of **FANTESTIC® UNIVERSAL BOND** as an self-etching one-component adhesive with **MDP** for the Self-Etch-Technique or for the Selective enamel etching in combination with an etching gel, to achieve a perfect adhesion.

### Order informations:

Description:	Content:	REF
ArtOral® Chroma FILL Syringe	1 syringe à 3 g	ACS1000
ArtOral® Chroma FILL Tips	10 tips à 0.3 g	ACT1000
ArtOral® Chroma BLOKK Syringe	1 syringe à 3 g	ACS1005
ArtOral® Chroma BLOKK Tips	10 tips à 0.3 g	ACT1005
FANTESTIC® UniversalBond (Self-Etch with MDP)	1 bottle à 5 ml + accessories	FUB6000

### Order information

FANTESTIC and ArtOral are registered trademarks of R-dental Dentalerzeugnisse GmbH.  
03/21. Product changes and errors excepted. © R-dental Dentalerzeugnisse GmbH 2021. All rights reserved.

Further products, information and R-dental manufacturer catalogue (paper-app®):  
R-dental Dentalerzeugnisse GmbH • Winterhuder Weg 88 • 22085 Hamburg • Germany  
T +49 (0)40-30707073-0 • F +49 (0)40-30707073-73 • E info@r-dental.com • I [www.r-dental.com](http://www.r-dental.com)

### Contact